

Courses and Distances down

Juniatta River

S 41 1/4 E 41

S 46 1/4 E 47

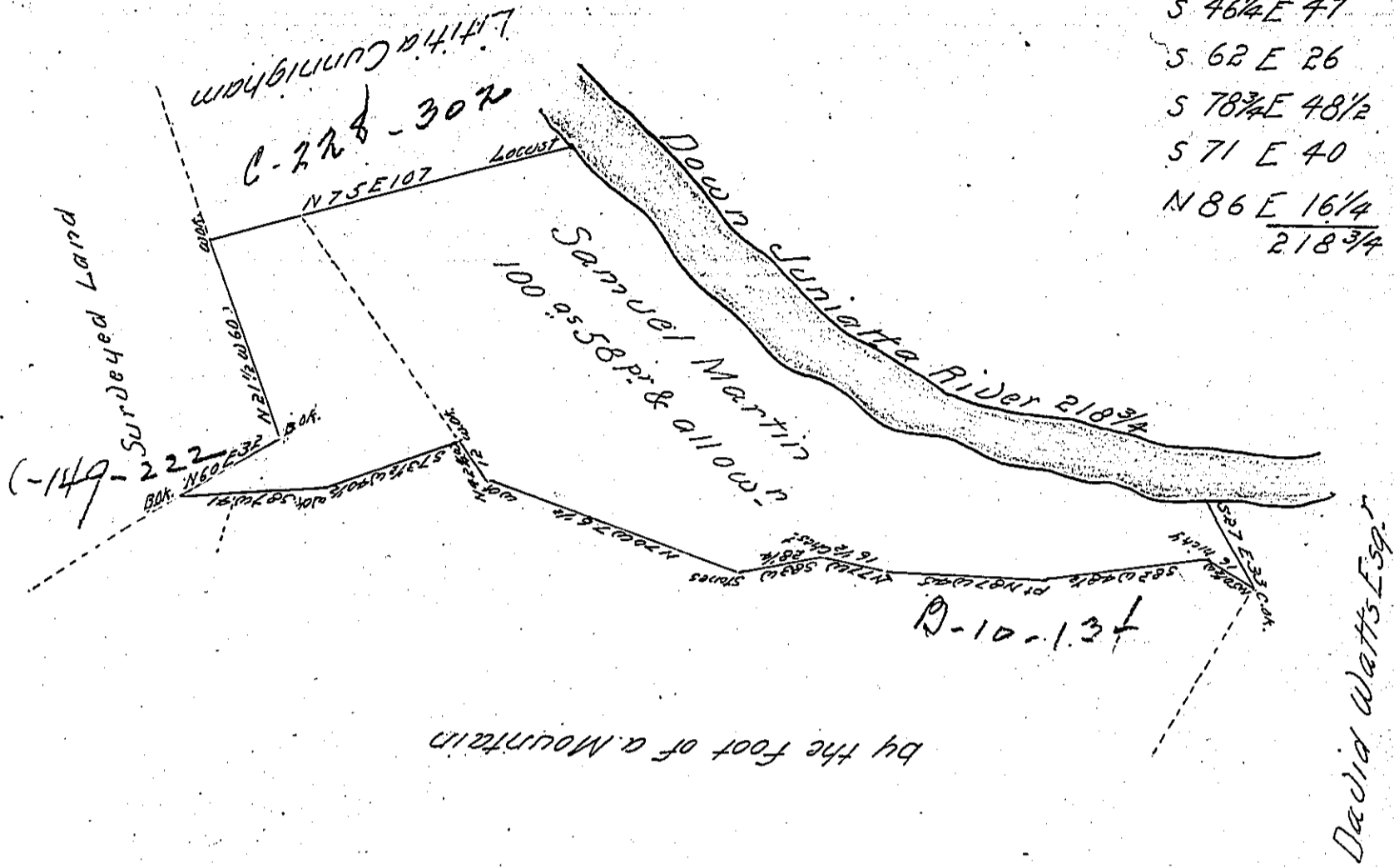
S 62 E 26

S 78 1/4 E 48 1/2

S 71 E 40

N 86 E 16 1/4

218 3/4



by the foot of a Mountain

A Draught of a Tract of Land situate in Rye Township Cumberland
 County Containing 100.9558 pr and allowance of six P Cent for roads
 &c Resurveyed the 16th day of April 1808 by Virtue of an applica-
 tion granted to Samuel Martin dated the 15th day of June 1768
 No 5048 (with an addition made to the same) &c

W^m Wheeler D.S.

To Sam^l Cochran Esq^r 56.

IN TESTIMONY that the above is a copy of the original remaining on file in
 the Department of Internal Affairs of Pennsylvania, made
 conformably to an Act of Assembly approved the 16th day of
 February, 1833, I have hereunto set my Hand and caused
 the Seal of said Department to be affixed at Harrisburg,
 this second day of February 1904

James D. [Signature]
 Secretary of Internal Affairs.